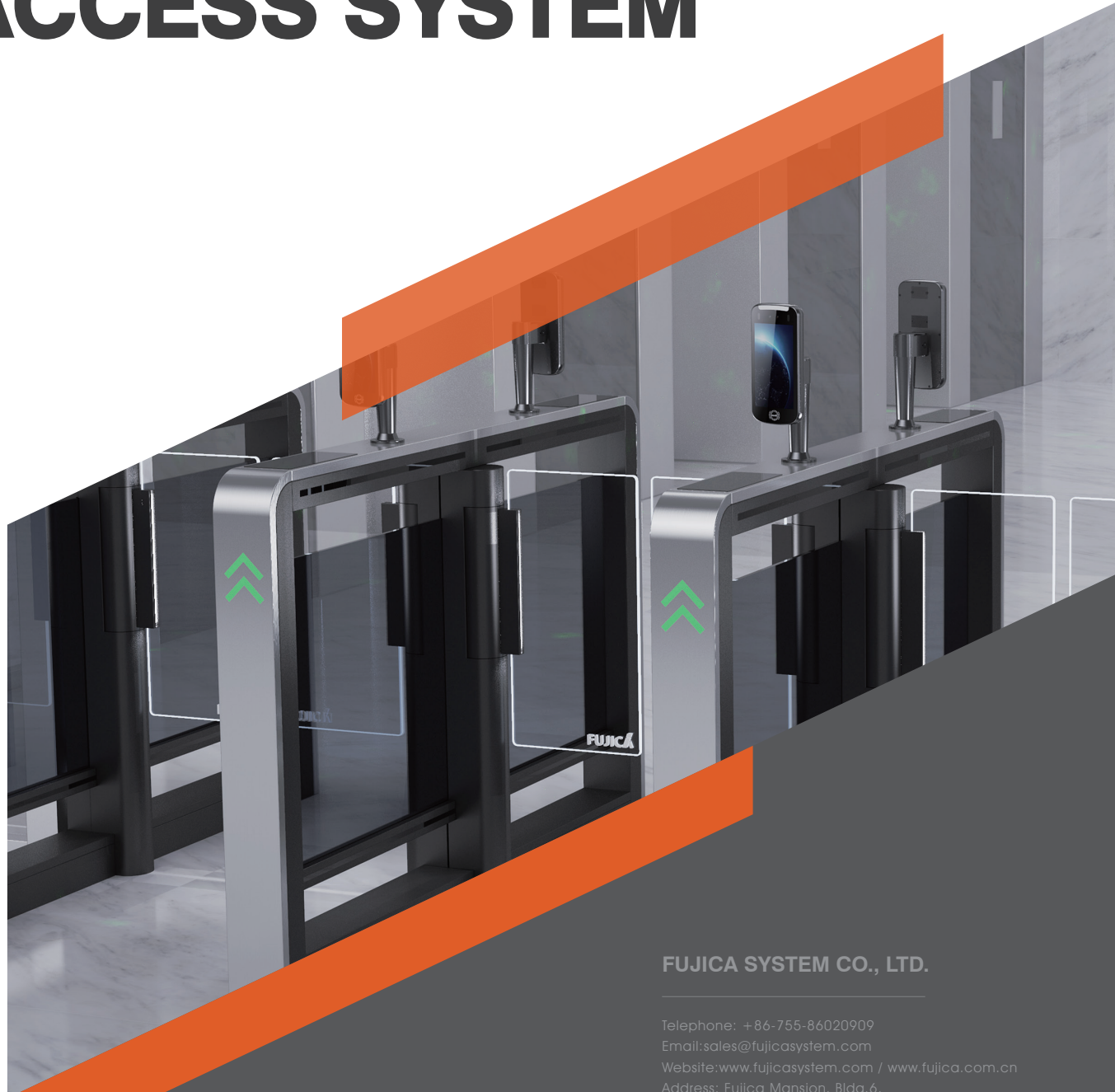


SMART PEDESTRIAN & VEHICLE ACCESS SYSTEM



FUJICA SYSTEM CO., LTD.

Telephone: +86-755-86020909
Email: sales@fujicasystem.com
Website: www.fujicasystem.com / www.fujica.com.cn
Address: Fujica Mansion, Bldg.6,
Jiuxiangling Industrial Park,
Xili Street, Nanshan District, Shenzhen, China

SWING GATE

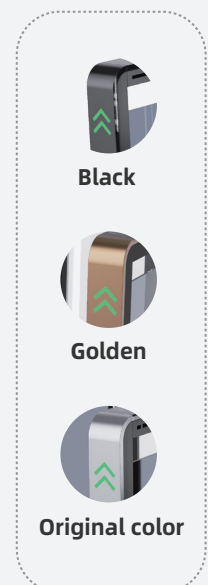
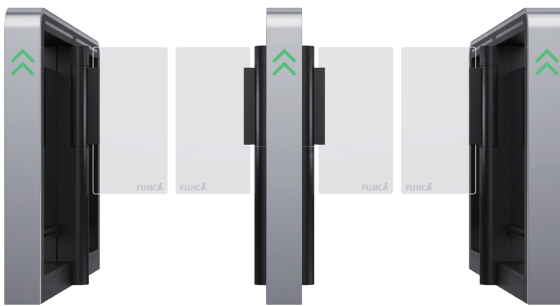
FJC-Z2689

The FJC-Z2689 serial intelligent swing gate is made of 304 stainless steel and integrally shaped by cold-rolled plate spraying. Its appearance is designed as a modern and simple style matched with lights and lines, giving the whole product a unique modern aesthetic feeling. This serial product uses the grating detection technology, is equipped with 64 pairs of electric eyes, and integrates functional modules such as the access control, face recognition, QR code scanner, main controller, sensors, alarm, and voice system. The product is characterized with a high standard, high quality, high integration, and high security, etc.

- Grating Detection and 64 Pairs of Infrared Electric Eyes
- Multiple Intelligent Protection Technologies
- Designed for Premium Office Building

TECHNICAL INFORMATION

Color	Golden, black and original color
Material	304 stainless steel
Dimensions (L*W*H)	1,500*118*980mm
Lane Width	600-1,150mm
Voltage	AC 220V/110V±10%, 50/60HZ
Motor	DC Brushless Motor/ Servo Motor
Passing speed	20-40 persons/minute
Opening-closing Speed	0.5s-1.5s adjustable
Number of Electric eyes	64 Pairs
Communication Protocol	RS485 and TCP/IP
IP Ratings	IP4X
Applicable Environment	Indoor

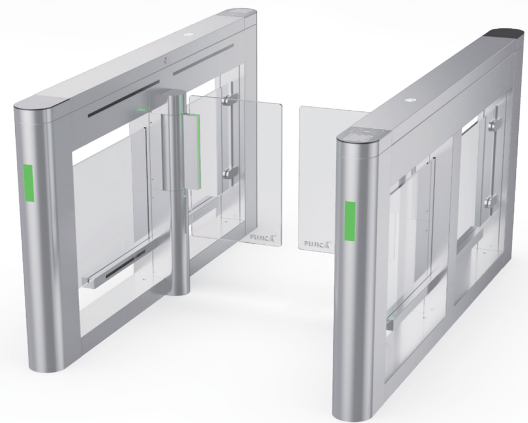


SWING GATE FJC-Z2358GB

- Ergonomic, Slim and Bright Design

TECHNICAL INFORMATION

Material	304 stainless steel
Color	Stainless steel original color
Dimension (L*W*H)	1,600*116*950mm
Lane Width	600-1,150mm
Motor	DC brushless motor
Power Supply	AC 220V/110V±10%, 50/60HZ
Passing Speed	20-40 persons/minute
Opening-closing Speed	0.5s-1.5s adjustable
Number of Electric Eyes	10 Pairs
Communication Protocol	RS485 and TCP/IP
IP Ratings	IP54
Applicable Environment	Indoor and outdoor



SWING GATE FJC-Z2528

- Solid and Durable
- Ideal for Outdoor Scenarios

TECHNICAL INFORMATION

Material	304 stainless steel
Color	Stainless steel original color
Dimension (L*W*H)	1,600*200*980mm
Lane Width	600-1,200mm
Motor	DC brushless motor
Power Supply	AC 220V/110V±10%, 50/60HZ
Passing Speed	20-40 persons/minute
Opening-closing Speed	0.5s-1.5s adjustable
Number of Electric Eyes	10 Pairs
Communication Protocol	RS485 and TCP/IP
IP Ratings	IP54
Applicable Environment	Indoor and outdoor



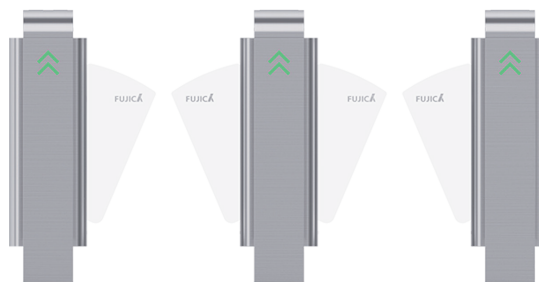
FLAP GATE

FJC-Z1116B

- Fast, Stable and Precise Performance

TECHNICAL INFORMATION

Material	304 Stainless Steel
Color	Stainless steel original color
Dimensions (L*W*H)	1,400*280*980mm
Lane Width	500 ~ 550mm
Motor	DC brushless motor
Power Supply	AC 220V/110V±10%, 50/60HZ
Passing Speed	30-40 persons/minute
Open-closing Speed	0.5s-1s adjustable
Number of Electric eyes	6 Pairs/40 Pairs
Communication Protocol	RS485 and TCP/IP
Applicable environment	Indoor and outdoor



SWING GATE

FJC-Z2148L

- Compact and Space-Saving
- Easy Installation

TECHNICAL INFORMATION

Material	304 stainless steel
Gate Material	Stainless steel or acrylic
Lane Width	Lane width ≤ 800mm single unit
Color	Stainless steel original color
Dimensions (D*H)	168*980mm
Power Supply	AC 220V/110V+10% 50/60HZ
Passing Speed	25 persons/minute
Communication Protocol	RS485 or TCP/IP
Working Temperature	-30°C to +70°C
Working Humidity	≤95%, no condensation

TRIPOD TURNSTILE

FJC-Z3619

- Full Automatic Operation
- Self-check and Auto-Reset



TECHNICAL INFORMATION

Material	Galvanized plate and 304 stainless steel
Dimension (L*W*H)	370*100*950mm
Lane Width	550mm
Access Speed	30-60 persons/minute
Working Voltage	AC 220V/110V±10% 50/60Hz
Total Power	50W
Communication Protocol	RS485 or TCP/IP
Working Temperature	-15°C to +70°C
Relative Humidity	≤95%, no condensation
Applicable Environment	Outdoor and Indoor

TECHNICAL INFORMATION

Material	Galvanized plate and 304 stainless steel
Dimension (L*W*H)	1,433*136*980mm
Lane Width	500-550mm
Access Speed	30-60 persons/minute
Working Voltage	AC 220V/110V±10% 50/60Hz
Total Power	50W
Communication Protocol	RS485 or TCP/IP
Working Temperature	-15°C to +70°C
Relative Humidity	≤95%, no condensation
Applicable Environment	Indoor and outdoor

TRIPOD TURNSTILE

FJC-Z3629

- Smart, Strong, and Cool Design



FULL HEIGHT

TURNSTILE GATE

FJC-Z5518D

- 360° Safe and Fast Access Control



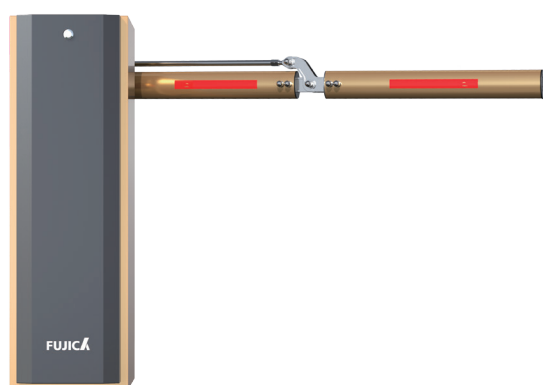
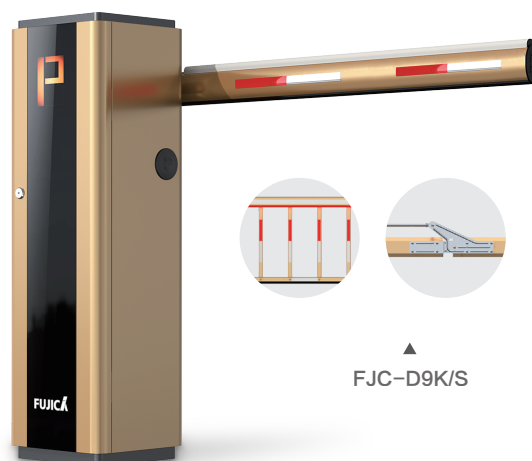
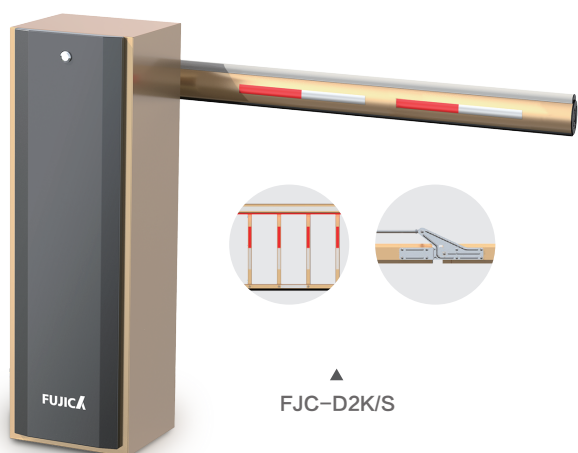
TECHNICAL INFORMATION

Frame Material	304 stainless steel+ tempered glass
Dimension (L*W*H)	1,500*1,433*2,252mm
Lane Width	590mm (one-way/two-way access)
Access Speed	40 persons/minute
Working Voltage	AC 220V/110V±10% 50/60Hz
Total Power	Single motor: 50W, Double motors: 100W
Communication Protocol	RS485 or TCP/IP
Working Temperature	-30°C to +70°C
Relative Humidity	≤95%, no condensation
Applicable Environment	Indoor and outdoor

VEHICLE BARRIER GATE

FJC-D2K/S FJC-D9K/S

- Fast, Stable and Smooth Operation
- Multiple Protection for People and Vehicle



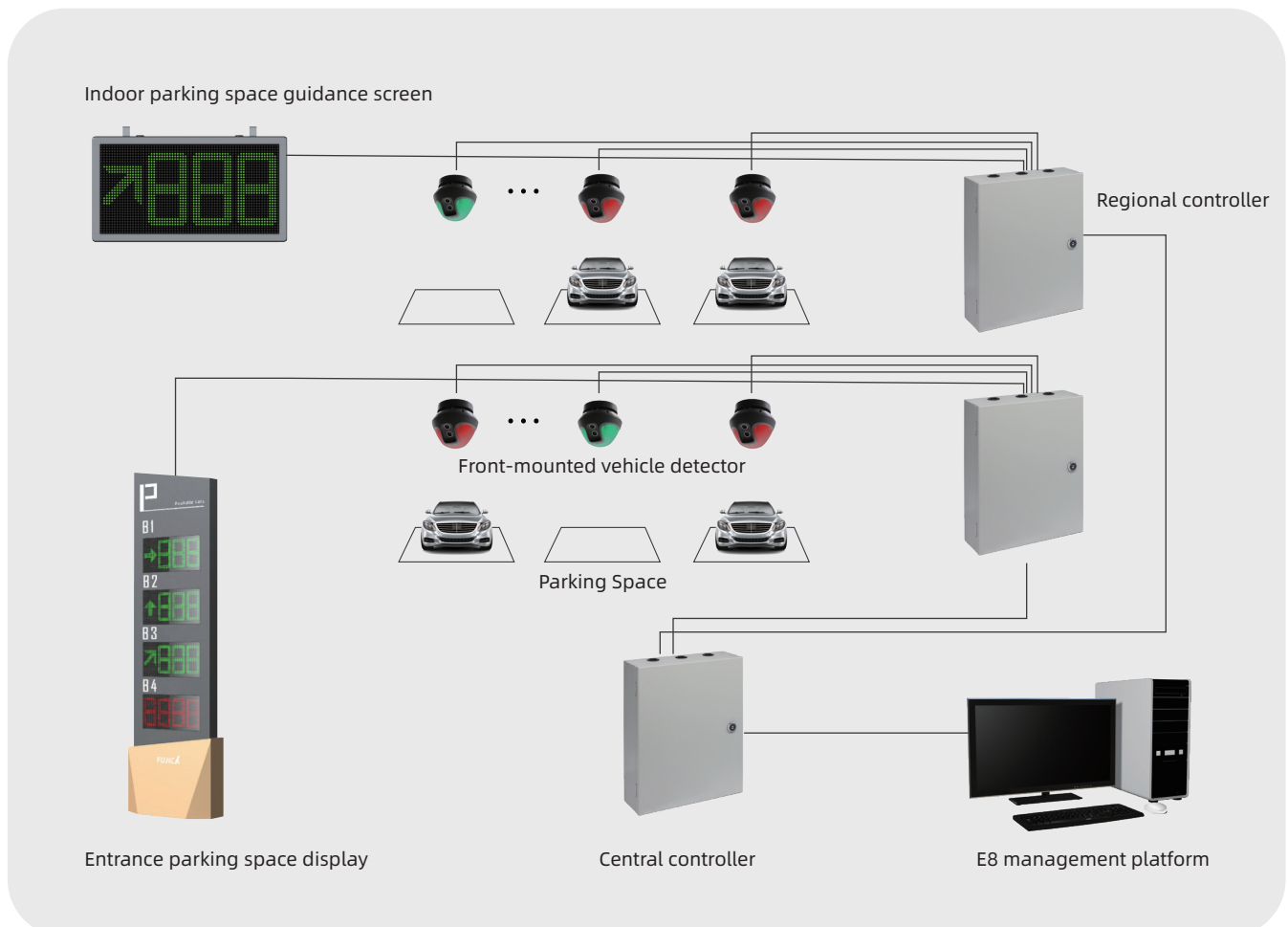
TECHNICAL INFORMATION

Product Model	FJC-D2K	FJC-D2S	FJC-D9K	FJC-D9S
Color	Champagne golden and silver black			
Cabinet Dimensions (L*W*H)	300*275*1,000mm		300*286*1,000mm	
Service Life	≥ 5 million times			
Remote Control Distance	≤30m			
Arm Type	Straight arm	Straight arm/ Folding arm/Fence arm	Straight arm	Straight arm/ Folding arm/Fence arm
Length of the Arm	Straight arm: ≤3m	Straight arm: ≤6m	Straight arm: ≤3m	Straight arm: ≤6m
	/	Folding arm: ≤5m	/	Folding arm: ≤5m
	/	Fence arm: ≤5m	/	Fence arm: ≤5m
Gate opening/closing time	≤1s	3s-5s	≤1s	3s-5s
Working Voltage	AC 220V/110V+10% 50/60Hz			
Total Power	≤200W			
IP Ratings	IP54			
Applicable Environment	Outdoor and Indoor			

ULTRASONIC PARKING GUIDANCE SYSTEM

The ultrasonic parking guidance system collects and displays the status information of each parking space in real time through the front-mounted ultrasonic detector. When a vehicle is detected in the parking space, the indicator light of the detector will change from green to red, and the detection result will be uploaded to the regional controller at the same time.

The regional controller collects the status information of the parking spaces in real time, and feeds back the data after compression and encoding to the central controller for processing; the central controller uploads the processed parking space data to the management system, and updates the parking space information to the indoor parking space guidance screen, and entrance remaining parking space display screen, and other front-end equipment in real time. The guidance system helps car owners eliminate the trouble of finding parking space, save parking time, and improve of parking lot management.



WE ARE FUJICA

Fujica System Co., Ltd. was established in 2004. The company is committed to the construction and operation of smart parking system, and pedestrian management system ecology. Being the leader and developer of access control management system and constructor of smart city ecological environment, Fujica System dominates over 20% market share in major cities of China, and products are widely used in over 80 countries.

- ◆ National High-Tech Enterprise In China
- ◆ Top 10 China Security Brand
- ◆ Independent Innovation Demonstration Enterprise
- ◆ ISO9001, ISO14001, ISO45001, ISO27001, ISO2000-1
- ◆ 80+ Patents, 100+ Software Copyright, 5+ National And Industry Standards

NO.1

Top enterprise in parking system and access control industry in China

20 years

Specialized in the field of access control system

30% +

R&D Team

80 +

Overseas countries business coverage

≥10000 m² Production workshop area

LANDMARK PROJECTS



GOOGLE, ARGENTINA



FOXCONN, VIETNAM



TSMC, CHINA TAIWAN



UNILEVER, SAUDI ARABIA



RICOH, JAPAN



CENTRAL PACIFIC BANK



FAAC, INDIA



ASEANA, PHILIPPINES



HANOI GOVERNMENT



UNIVERSITY OF LEON